

US Department of Agriculture Environmental Management Program



Karen Zhang, Chief, Environmental
Management Division

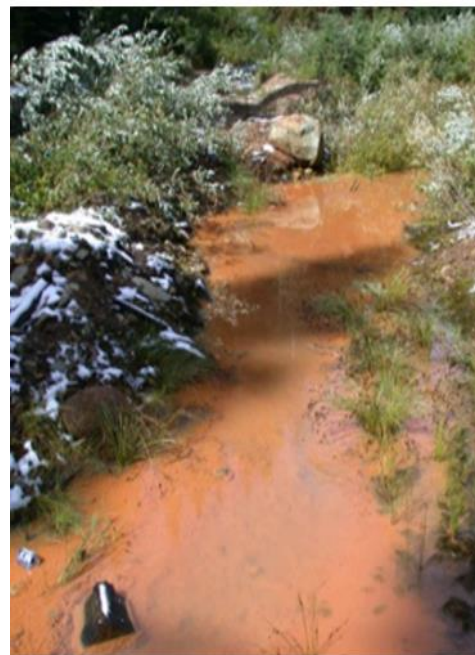
Office of Property and Environmental
Management



Fund BARC
National Priority
List Site Cleanup



Fund FSA Historic
Grain Silo Site
Cleanups



Support Abandoned
Mine Land Cleanups
– no longer HMMA
funded



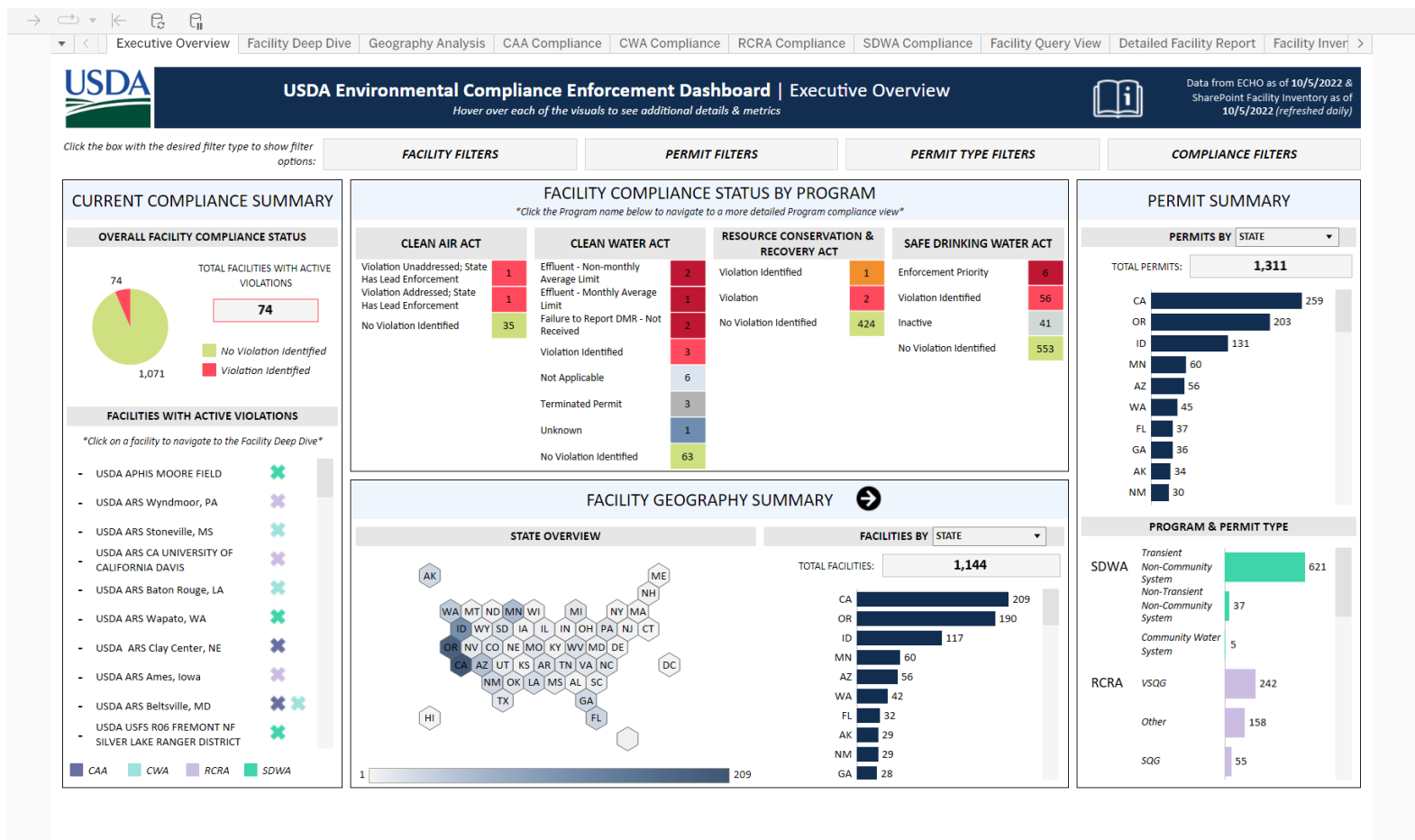
Improve USDA
Agency Collaboration
with DoD on site
cleanup



Improve Facility
Environmental
Compliance

USDA Environmental Management Program Priorities

Environmental Compliance Program Improvements



- Update of Departmental Regulation (February 2022) – Requires Environmental Compliance Plans inclusive of all leased and owned facilities.
- Created Environmental Compliance Dashboard – Link of all facilities to US EPA’s Enforcement and Compliance History On-Line (ECHO) Database

USDA PFAS-related Activities

Support to Farmers/Producers

- Dairy Indemnity Payment Program (DIPP) - FSA's program pays for loss of contaminated milk and loss of dairy cows because of PFAS contamination.
- FSA Monitoring, Assessment, and Evaluation project - research on PFAS uptake in perennial grasses.
- NRCS Conservation Evaluation and Monitoring Activity (CEMA) - offering sample collection and laboratory analysis to determine if PFAS may be present in soil or water on agricultural operations.
- NRCS researching conservation practices –identifying activities that can be used to support producers and mitigate the impacts of PFAS in agricultural media.
- FSIS monitoring program for pork, beef, chicken, and catfish. Provide technical assistance to States for specific cases.
- FSIS is addressing PFAS concerns in food in close coordination with FDA and other Federal partners.

Identifying Potential Source Areas on USDA Managed land

- Landfill Survey - assessment of all closed landfills or those in Long-Term Monitoring that could be potential sources. Sample select potential source areas that could threaten drinking water.
- Drinking water sampling – evaluate sampling USDA's non-transient community/non-community supply wells for PFAS.