



MICHIGAN DEPARTMENT OF
ENVIRONMENT, GREAT LAKES, AND ENERGY

Risk Communication: Michigan's PFAS Survey in Retrospect

Ian O. Smith, Ph.D.

Drinking Water and Environmental Health Division

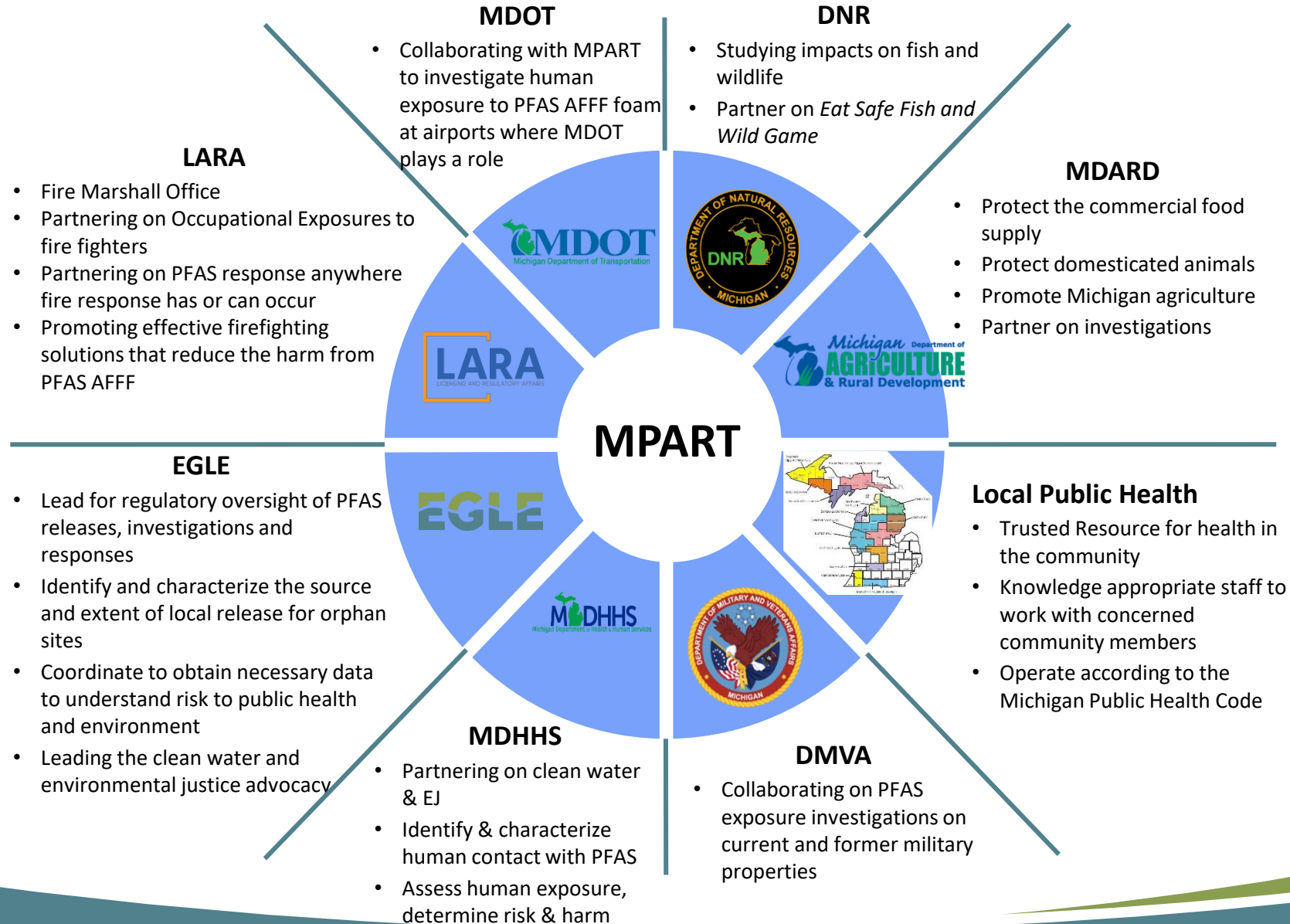
(517) 256-2474 | smithi@michigan.gov

Michigan PFAS Action Response Team (MPART)






- Executive Order 2019-03
- Unique Multi-Agency Approach
- Leads Coordination and Cooperation Among All Levels of Government
- Directs Implementation of State's Action Strategy

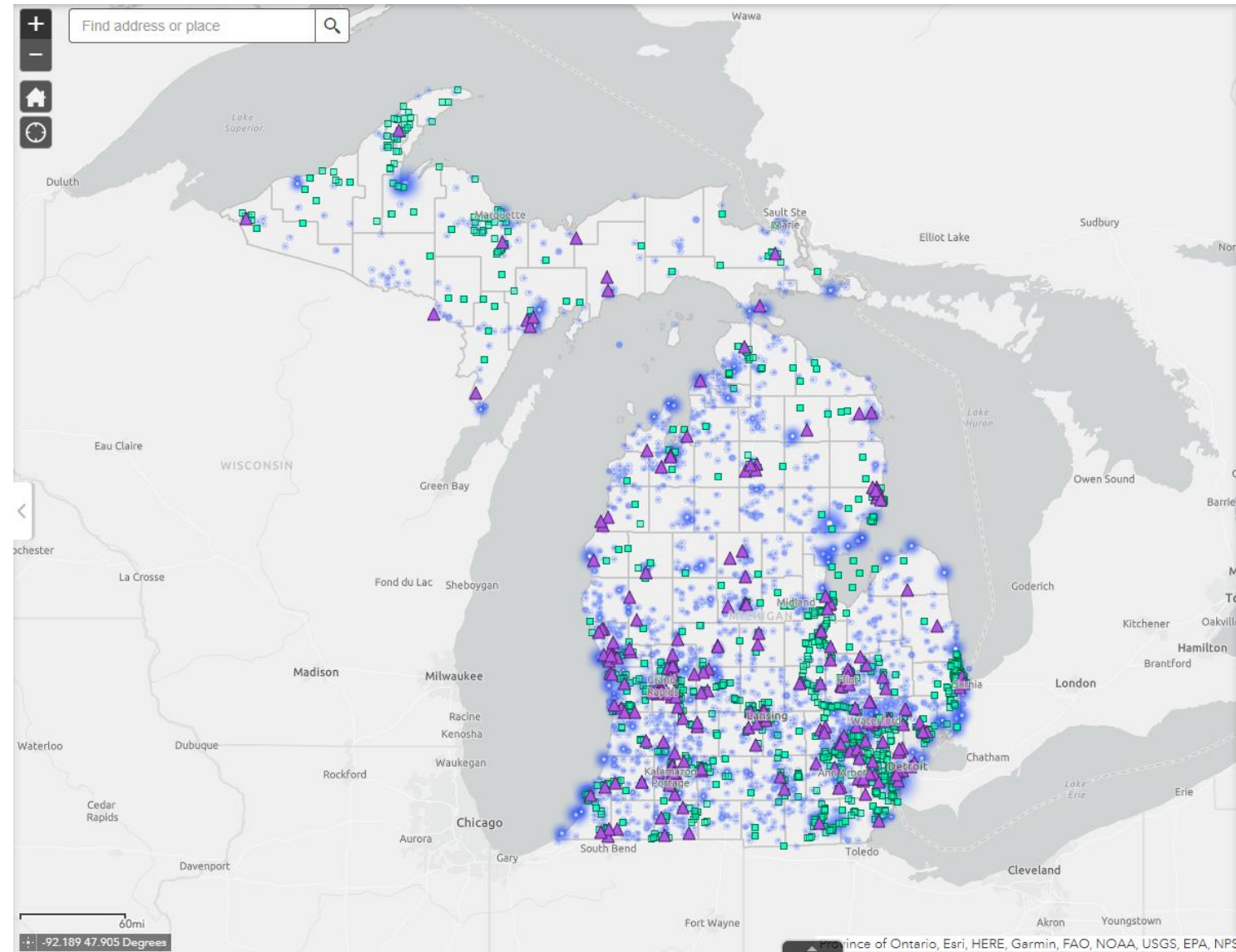
MPART Coordination of Roles



PFAS Sampling in Michigan

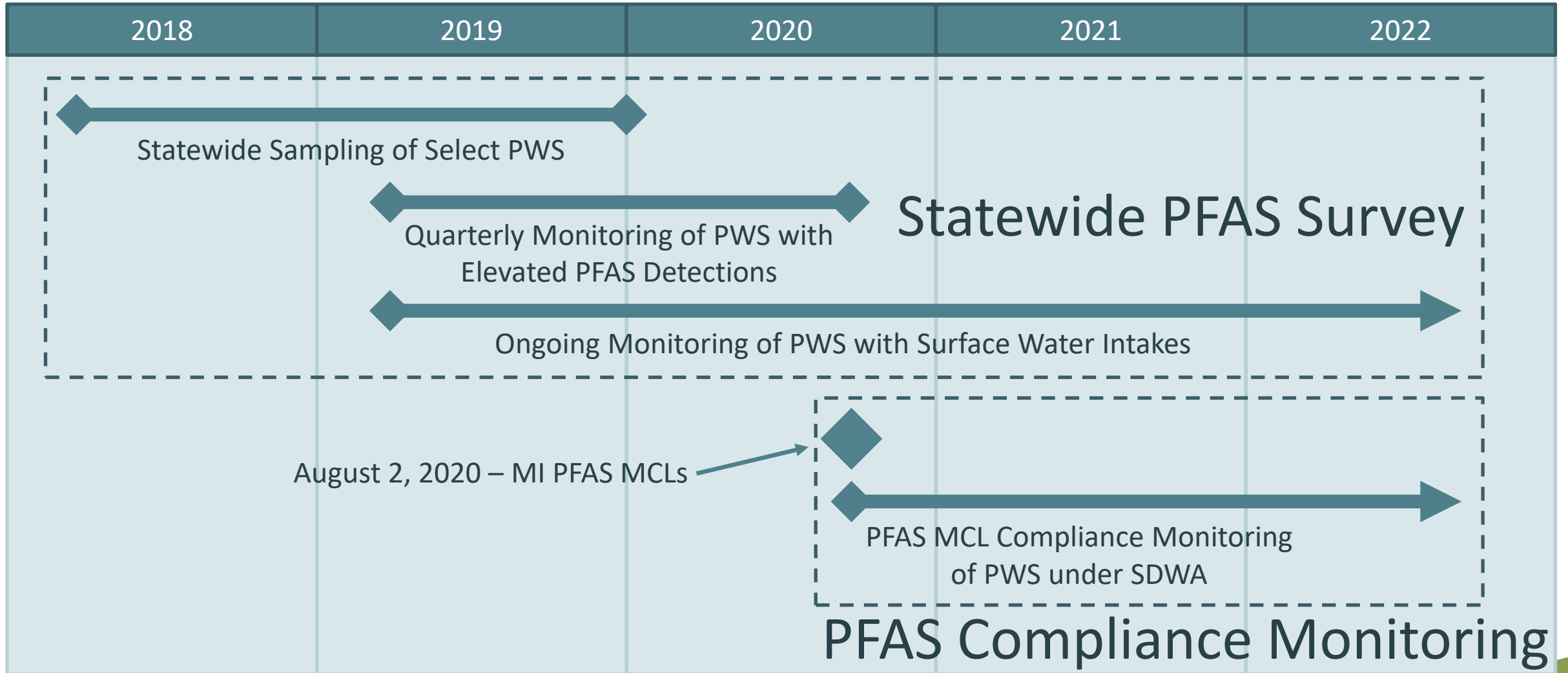
MPART: PFAS GIS (9/13/2022)

Number of Features in Current Map View (zoom in or out to adjust number)		
	Number of PFAS Sites in View	228
	Number of PFAS Surface Water Samples in View	2,047
	Number of Statewide PFAS Public Drinking Water Supply Sampling Hexagons in View (# represents # of hexagons in map view, not number of samples. Click on a hexagon to view # of samples)	1,486

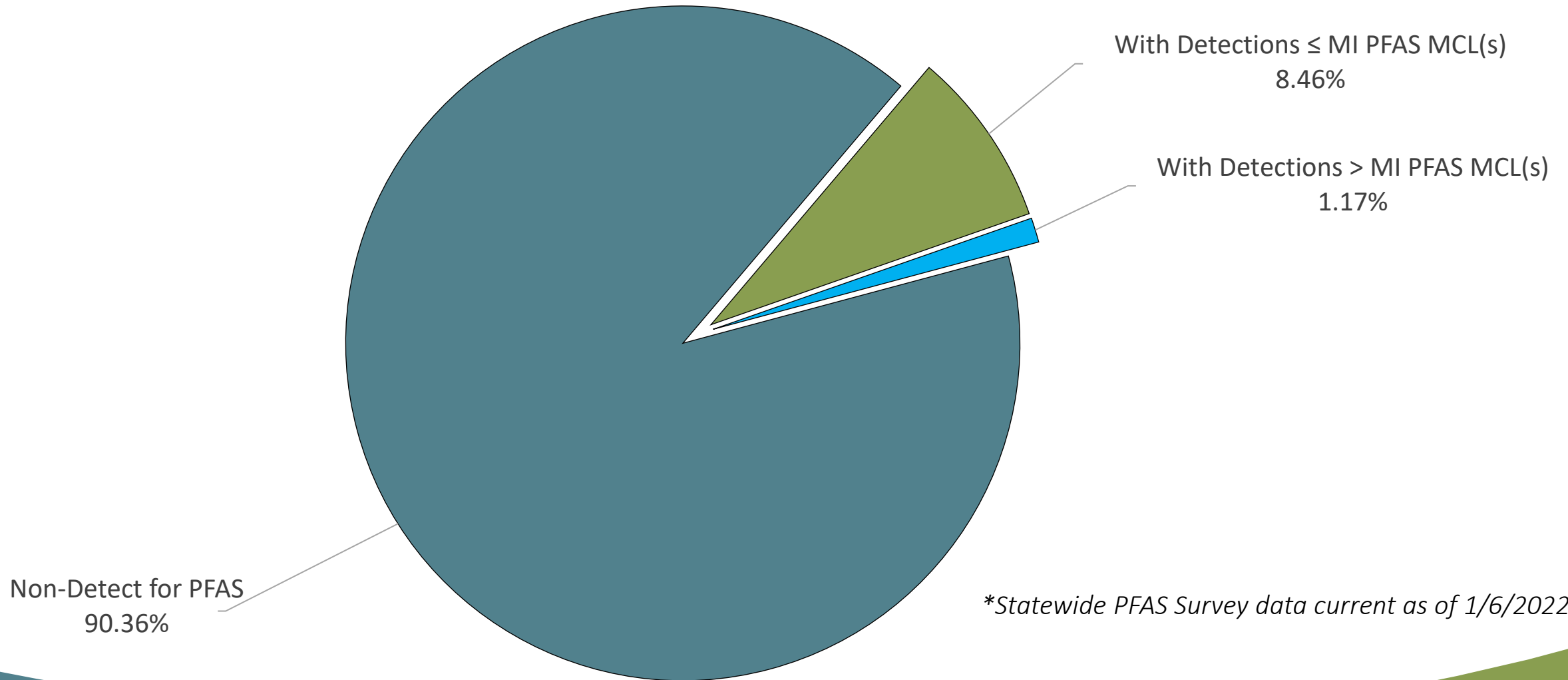


<https://egle.maps.arcgis.com/apps/webappviewer/index.html?id=bdec7880220d4ccf943aea13eba102db>

Timeline of PFAS sampling in MI PWS (2018 – present)



MI Statewide PFAS Survey: Supplies Sampled



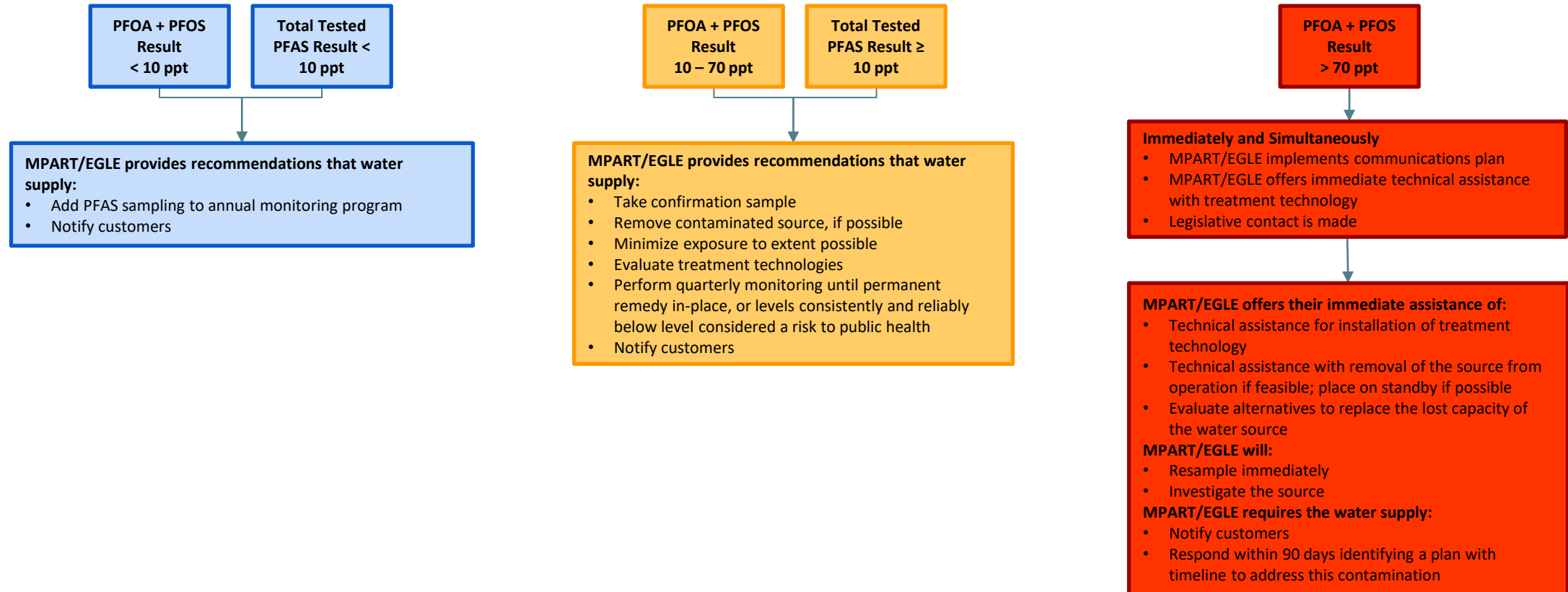
**Statewide PFAS Survey data current as of 1/6/2022.*

Statewide PFAS Survey: Supplies Sampled

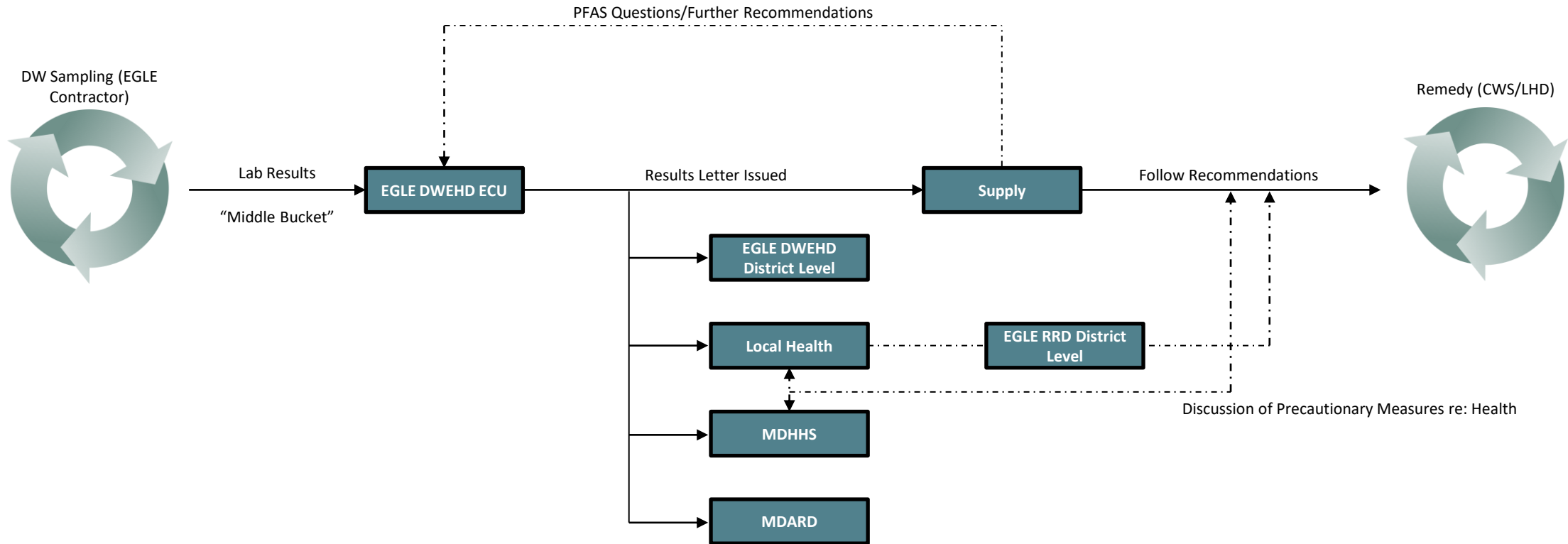
	Supplies Sampled	Non-Detect for PFAS	Detections ≤ MI PFAS MCL(s)	Detections > MI PFAS MCL(s)	> 70ppt PFOS/PFOA (USEPA LHA)
Community Water Supplies (Type I)	1,117	988	118	11	1
Noncommunity Water Supplies (Type II)	1,336	1,227	91	18	2
Tribal Supplies	17	17	0	0	0
Total	2,470	2,232	209	29	3

**Statewide PFAS Survey data current as of 1/6/2022.*

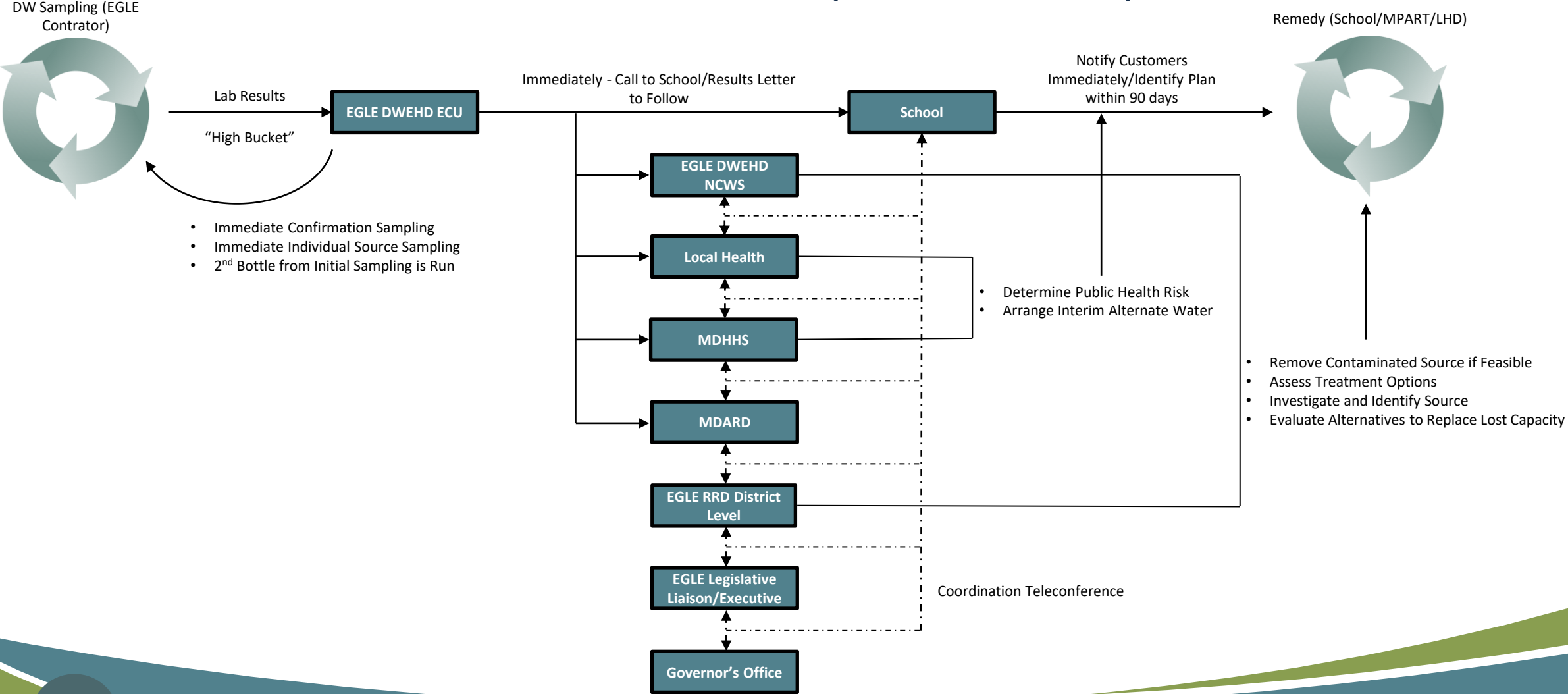
Statewide PFAS Survey: Historical Supply Notification Protocol (2018 – 2020)



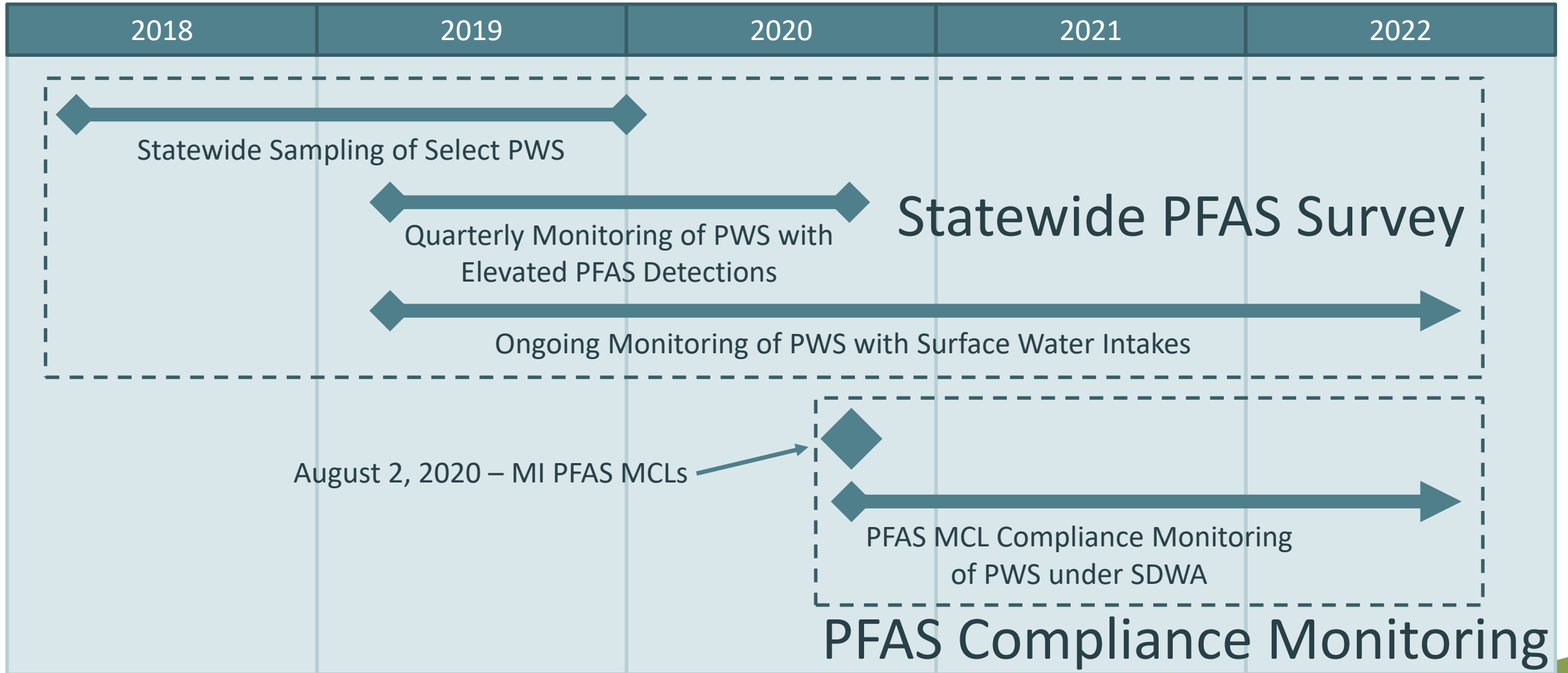
Process Example for PWS in “Middle Bucket”: Historical Supply Notification Protocol (2018 – 2020)



Process Example for PWS in “High Bucket”: Historical Supply Notification Protocol (2018 – 2020)



Timeline of PFAS sampling in MI PWS (2018 – present)



MI Statewide PFAS Survey (2018 – 2020): Outcomes

- Identified supplies with PFAS impact
 - Provide proactive guidance for supplies likely to be affected by any future regulations
 - Assist supplies in exceedance of USEPA LHA in corrective activities
- Assessed seasonality in PFAS results
 - Supplies with detection levels of interest
 - Supplies utilizing surface water as a source
- Provided EGLE with data for rule development

MI Statewide PFAS Survey (2018 – 2020): Outcomes

- Developed framework for interagency communication
 - Analytical results shared and communications coordinated
 - Wholistic approach in addressing PFAS detections
- Eventually implemented regulatory framework for public water supply testing, through the MI SDWA
 - Standard monitoring schedules, sampling methodologies, analytical methods, reporting requirements
 - Standard response to exceedances and monitoring violations, including public notification

Questions?

Ian O. Smith, Manager

Emerging Contaminants Unit

Drinking Water and Environmental Health Division

Michigan Department of Environment, Great Lakes, and Energy

Email: smithi@michigan.gov

Telephone: 517-256-2474

Michigan Department of
Environment, Great Lakes, and Energy

800-662-9278

Michigan.gov/egle



Follow us at: Michigan.gov/egleConnect