

CHALLENGES FACING FIRST
RESPONSE CONTRACTOR
CLANDESTINE METH LAB CLEAN-UPS

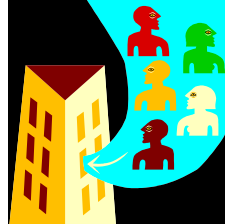


KEY CHALLENGES FOR CLEAN-UP CONTRACTORS



- Hard to Maintain Adequate Staffing Levels
- Safety of Personnel From Inherent Dangers of the Work
- Administrative Burden

CHALLENGES TO ADEQUATE STAFFING



- Sporadic nature of Calls Makes it Difficult to Keep Responders (0 Labs for 4 months, than 12 labs in 1 month)
- Requires a 24/7 commitment, 365 days a year
- Responders are Part time; Must be Flexible Concerning Full Time Job
- Security Clearance Hurdles Greatly Reduces the Pool of Qualified Individuals

INHERENT DANGERS/SAFETY CONCERNS

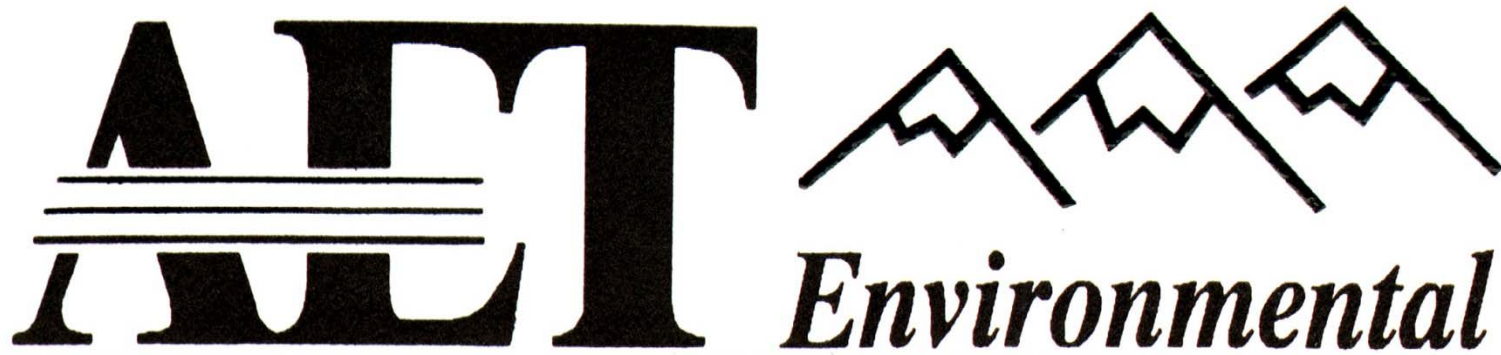
- Nature of the Work is Inherently Dangerous (dealing with “unknowns”, leaking cylinders, highly flammable materials (ether))
- On Scene Hazards (Booby traps, drug elements-people trying to buy meth)
- Long Hours/Fatigue (long distances to Labs, multiple labs in the same day)





Administrative Challenges

- Completing and Maintaining Complete Security Packages for Contract Personnel
- On Line Invoicing Requirements (Require CDs-delaying payment)
- Numerous Quarterly Control Reports (QC Report, Monthly Security Report, Final CD Report, Waste Tracking/Outstanding containers, Estimated Quantities Analysis-tracks “budge vs actual”)
- Policies and Plans (Key Control Policy and Officer, Security Plan, Container Management Policy, Adulteration Plan, Spill Control Plan.



Your Experts in Environmental Compliance
and
Waste Management Services