

Facilitating Access to Superfund Information

Presented at the CERCLA SYMPOSIUM
Use of Web-Based Mapping Tools for Public Access to
Information on Institutional Controls and Contaminated
Sites

October 24-25, 2006, Kansas City, Missouri

Michael Bellot and Larry Zaragoza
U.S. Environmental Protection Agency

Presentation Outline

- ◆ New opportunities for displaying state and EPA environmental data
- ◆ EPA efforts to assemble information for the public
- ◆ Opportunities for merging state and EPA data

The New Tools

- ◆ New Internet tools – e.g., Google Earth, Microsoft Live
 - » powerful search engines
 - » consolidated data
 - » growing popularity
 - » multiple uses (e.g., planning trips, selecting hotels, finding banks, mapping distances)
- ◆ Data from government agencies will be provided on these sites
- ◆ How should we work with these data providers?

Working with New Tools

- ◆ EPA's Office of Environmental Information lead
- ◆ Superfund is the first to work with OEI
- ◆ IC data from various agencies are needed for a full understanding
- ◆ States and local government data

IC Information Helps to better manage Sites

- ◆ ICs are needed to protect health and remedies
- ◆ ICs inform responsible redevelopment
- ◆ The banking/insurance/other financial want to know that ICs are in place
- ◆ All Appropriate Inquiry

Sites that may Require ICs and EC

Program	Universe of Sites	Comment
Superfund NPL	1,600	About 900 construction complete sites
RCRA Corrective Action	3,800	There is a much larger universe of generators and treatment, storage and disposal facilities that could require ICs
UST	260,000 Sites	Of these, about 900 sites are managed by EPA as Federal-lead Tribal
Brownfields/ Voluntary Cleanup	400,000- 500,000	These sites are managed at the local/state level

Why is effective communications on IC/EC information so important?

- ◆ Because information on ICs/ECs may only be found in documents that are not readily accessible, important information may not be available to support:
 - » Permitting decisions
 - » Land transactions
 - » Excavation activities
 - » Land use planning
- ◆ Any of the above could impact the integrity of ICs/ECs

Data Under Consideration for EPA to suggest

- ◆ Start data sharing with Superfund sites
 - » Of high interest
 - » Data is available
- ◆ Start simple and provide a model for expanding data shared
- ◆ Basic (minimum) Data to include:
 - » Site name
 - » Latitude/longitude
 - » Link to Agency site with additional information
 - » Site Identifier number

Superfund Plans for Release of IC Information to the Public

- ◆ Superfund information released on ICs includes high level descriptors:
 - » **Yes**
 - » **No**
 - » **Under Review:**
 - » **No Designation** (left blank):

Expanding Information prepared for Data Providers

- ◆ Data Providers want information with the same definitions and format
- ◆ The IC Data Standard provides definitions and XML Schema
- ◆ Technical Specification developed for GIS data
- ◆ Discussion has been initiated with ASTSWMO's Long Term Stewardship group
- ◆ A meeting with data providers will be hosted by EPA date TBD

IC Data Standard Development

- ◆ Collaborative development process under the Environmental Data Standards Council
- ◆ Developed as a tool for exchanging information with States/Tribes and others
- ◆ Component-based structure to facilitate data exchange and foster reuse
- ◆ Flexible design to accommodate future additions to existing lists

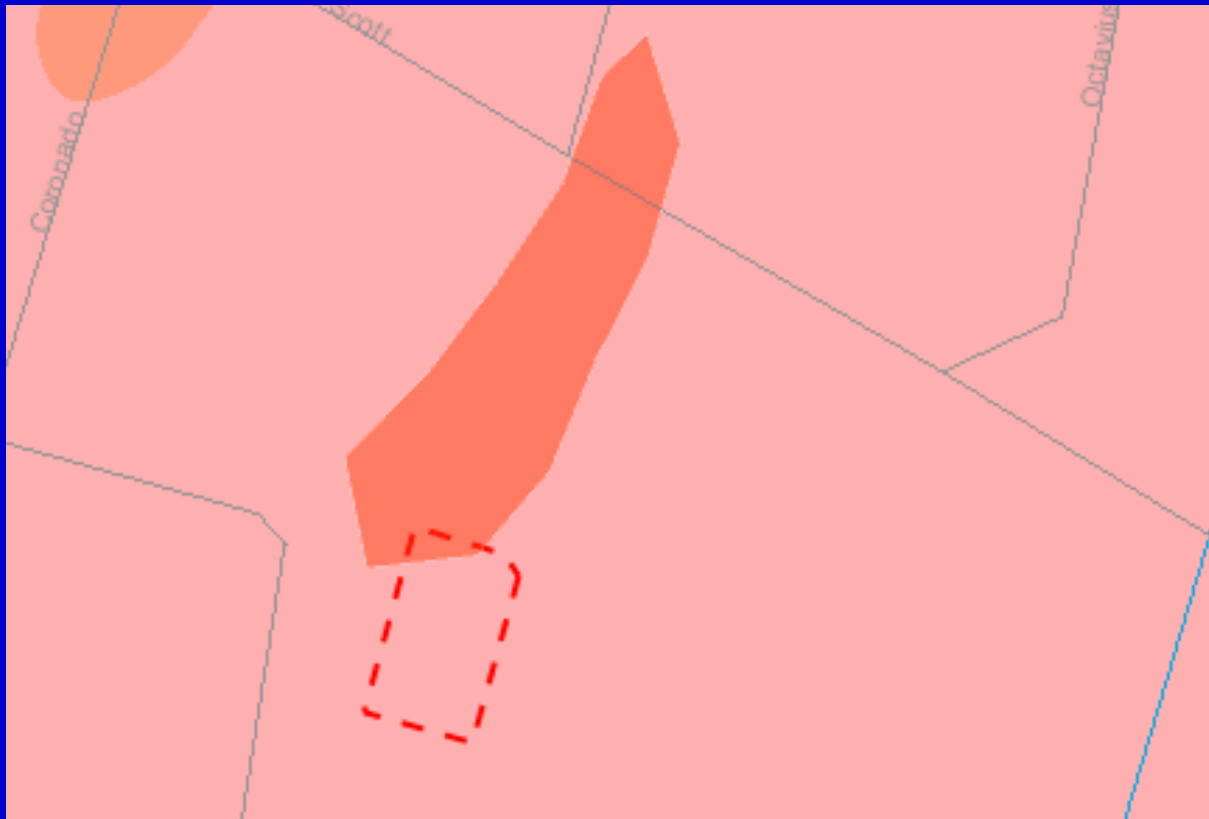
Data Standard Components



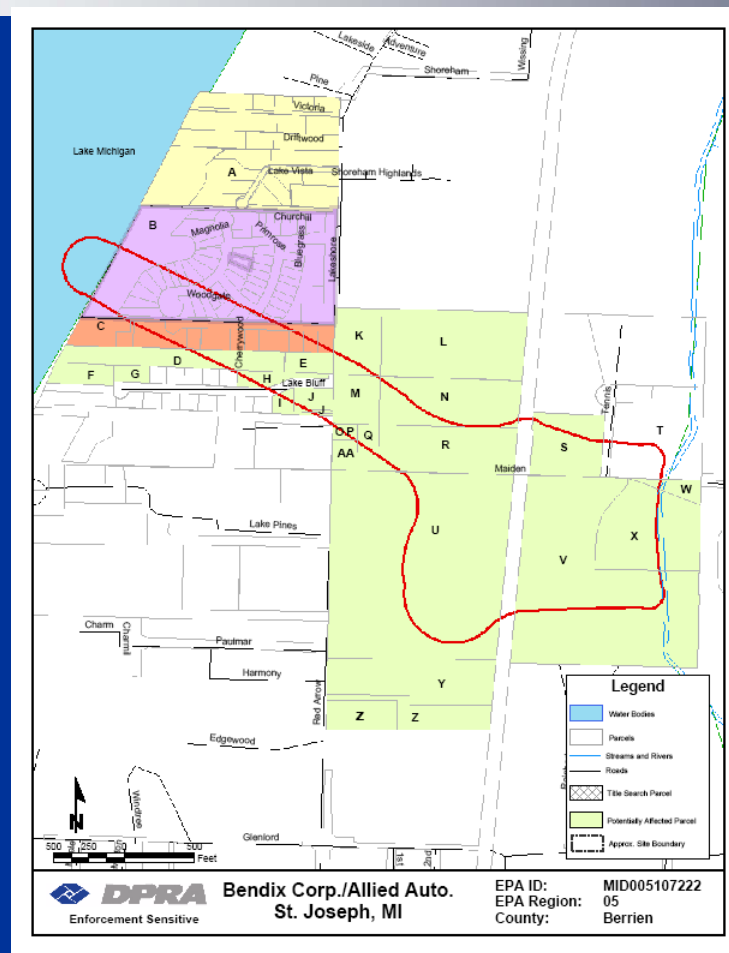
GIS data will make a difference in maintaining the integrity of ICs

- ◆ Facilitate the comparison of contamination with ICs/ECs
- ◆ Comparisons may require adjustments to ICs and ECs
- ◆ Facilitate review of requests for excavation
- ◆ Efforts to integrate IC information into one call systems is under discussion
- ◆ Facilitate land use planning reviews

GIS Facilitates Comparisons such as the area of contamination with ICs/ECs



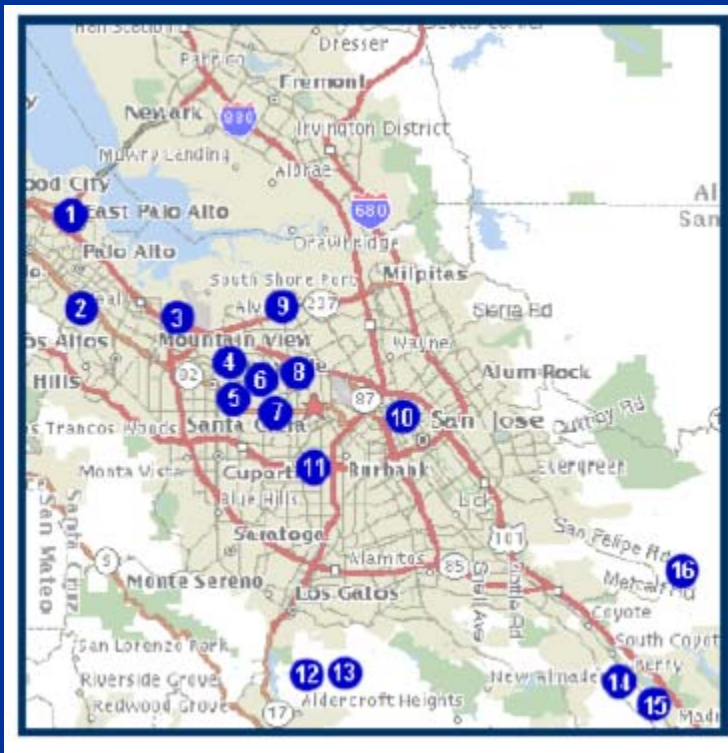
Identify Non Source/ Off-Site Property Requiring Restrictions (ICs)



How will GIS data make a difference in maintaining the integrity of ICs? (Cont.)

- ◆ Maps will be far more effective in communicating the location of residual contamination and IC/ECs to the public than text
- ◆ Aerial and site photos would also be helpful to inform the public on sites

Cleanups in My Community



Users can zoom in or call up a geographic area by State, County or City

<http://www.epa.gov/enviro/cleanups/>

Next Steps

- ◆ Work with OEI to provide information to data providers and states to develop a data model
- ◆ Collect GIS information to include area of contamination, ICs, Engineering controls
- ◆ Work with data providers to obtain feedback on efforts

For Information

- ◆ Michael Bellot

- » Belloc.Michael@epa.gov

- » 703-603-8905

- ◆ Larry Zaragoza

- » Zaragoza.Larry@epa.gov

- » 703-603-8867

- ◆ www.epa.gov/superfund/action/ic/index.htm

- ◆ <http://www.envdatastandards.net/>